



Key Features

- Stylish low-profile bezels available in multiple styles and colors.
- Available with white or black faceplate and buttons.
- Full VGA resolution LCD to display custom buttons, text and graphics.
- Integrated high-resolution touchscreen.
- Integrated 10/100Base-T Ethernet port with Power-over-Ethernet.
- Plasma friendly infrared receiver for command pass-through.
- IR output port drives up to 1,000 feet of wire.
- Two power status input ports.
- Powerful 32-bit, 400MHz XScale processor.
- 32MByte of Flash Memory.
- Integrated mounting wings for easy installation.
- Nine assignable/programmable keys.
- Completely customizable and programmable.
- Non-volatile Flash Memory stores your program even when power is lost.
- Field upgradable firmware.
- USB and Ethernet programming.

RK3-V In-Wall Controller

The RK3-V provides elegant and intuitive control of today's entertainment, environment and security systems. Representing the second generation of the award-winning RK-3 In-wall Controller, the RK3-V is capable of displaying text and graphics with incredibly rich and vivid detail with a new full VGA display - 4 times the resolution of it's renowned predecessor.

Designed for flush-mount installations in walls or cabinets the RK3-V is the only compact in-wall touchpanel that provides both direct infrared control and 10/100Base-T Ethernet for displaying digital video (motion JPEG) and web pages – either full screen or in an adjustable window. In addition, the RK3-V is unique because its graphical user interface (GUI) and programming are completely customizable. In any situation, from simple to complex, the RK3-V provides the perfect level of control.

Description

The design of the RK3-V In-wall Controller allows it to blend into any room. The perfect balance between display size and resolution, a 3.5 inch LCD is small enough to fit in any decor, yet it provides the necessary resolution for displaying custom graphics, web pages and CD cover artwork. A fully programmable interface using RTI's Integration Designer® software makes it easy to provide simple and intuitive control for the end-user.

The RK3-V can be used as a stand-alone device or as a part of an expandable central control system. It can directly control almost any audio/video component or lighting system up to 1000 feet away using its infrared output port. When used with the available RTI accessory devices, the RK3-V is capable of infrared routing, relay control, power sensing, and two-way RS-232 communications for advanced control.

In addition, the built-in Ethernet port allows the RK3-V to display video from network security cameras, access the internet, view and play songs stored on hard drive music servers, and control other devices on the network.

Call 952-253-3100

www.rticorp.com



It's Under Control®

Specifications

Power.....	+9VDC to +16VDC, .5A max or 802.3af Power-over-Ethernet
Power Management	Adjustable backlight brightness/power down time
Touchscreen Display.....	High-brightness color TFT LCD
.....	Full VGA (480x640 pixels) with 65K colors
.....	Integrated high-resolution resistive touchscreen
Display Size.....	3.5 in (89mm) diagonal
Backlights	White LED (Display), Blue/Amber LED (Keypad)
Infrared Output Port.....	200mA output
.....	Drives up to 1000 ft (300 m) of wire
Ethernet Port.....	10/100Base-T with Power-over-Ethernet
Operating Temperature.....	+32°F to +122°F (0°C to +50°C)
Operating Humidity.....	5% to 95% Non-condensing
Total System Memory.....	32M Bytes Flash (non-volatile) memory
Device Capability.....	Total number of devices is limited only by memory
Macro Capability.....	Unlimited steps in a single macro
.....	Total number of macros is limited only by memory
.....	Macro capability on every button
Communications.....	USB programming port
Enclosure.....	High-impact molded ABS plastic, black
Front Plate.....	High-impact molded ABS plastic, gray or black
Mounting.....	Integrated mounting wings, or screws through front bezel
Front Plate Dimensions (H x W).....	5 3/4 in (146mm) x 5 1/2 in (140mm)
Installation Cut-Out (H x W).....	5 1/8 in (130mm) x 4 3/4 in (120mm)
Total Depth in Wall	1 1/8 in (29mm) plus cables
Weight	10 oz (284 g)
Warranty.....	One Year (Parts & Labor)

All specifications subject to change without notice



Also available in white.

Bezel Colors

White
BZW-RK3

Almond
BZA-RK3

Ivory
BZI-RK3

Silver
BZS-RK3

Black
BZB-RK3

Premium bezels also available in Black Anodized (shown on front page) and Brushed Aluminum.

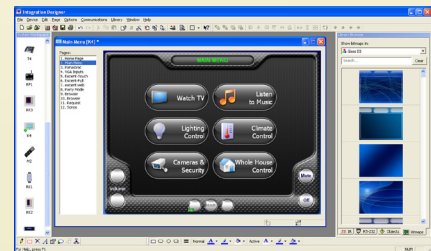
Accessories

PS16-1	Power Supply
CB-8	Touchpanel Connecting Block
PCB-K3	Pre-Construction Bracket
BB-K3	Pre-Construction Conduit Box
ZRP-5	Remote Control Processor
ZRP-6	Remote Control Processor
MRP-64	Multi-Room Control Processor
XP-8	Advanced Control Processor
CPB-1	Control Port Connecting Block
RCM-12	Relay Control Module
ECB-5	IR Emitter Connecting Block
vIRsa Mouse	IR Emitter
CM-232	RS-232 Communication Module
VPS-1	Voltage Power Sensor
SPS-1	Video Sync Power Sensor



Other RTI Products

T1-B	Universal System Controller
M2	Universal System Controller
T2-B	Universal System Controller
T2-Cs	Universal System Controller
T2-C	Universal System Controller
T3-V	Universal System Controller
T4	Universal System Controller
U1	Weather Resistant Controller
U2	Weather Resistant Controller
RKM-1	In-Wall Multi-Room Audio Keypad
RK1	In-Wall Keypad Controller
RK2	In-Wall Touchscreen Controller
K4	In-Wall Touchscreen Controller
IR-PRO	Infrared Capture System



Integration Designer® Programming Software



It's Under Control®